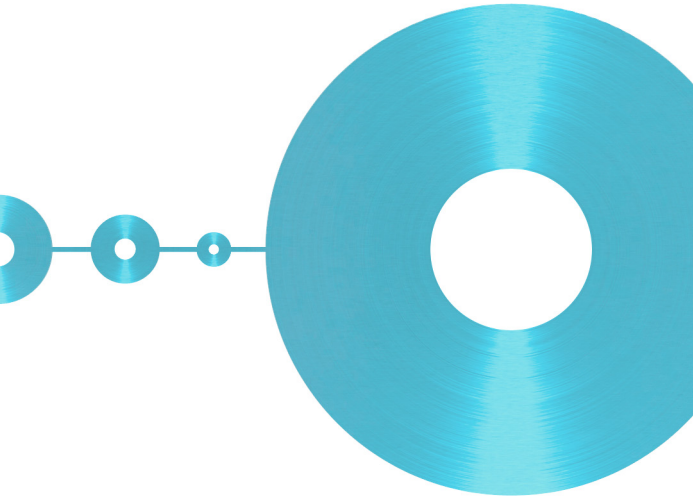


Installation and Licensing **Quick Reference**



www.iar.com



This Quick Reference booklet describes how to:

- Install and register IAR Embedded Workbench® with a **stand-alone license** (single-user license)
- Install and register IAR Embedded Workbench® with a **network licence** (multi-user license)
- **Upgrade** your existing IAR Embedded Workbench®
- **Transfer** your license from one computer to another.

For more detailed information, see the *Installation and Licensing Guide*, which is included on the product CD as the file *InstallationGuide.pdf*.

Installation procedure—stand-alone license

The IAR Embedded Workbench installation is a three-stage procedure:

- A** Install the IAR Systems software using a **QuickStart key**, which allows you to use the product for 30 days.
- B** During this 30-day period, you must register your license with IAR Systems. Within 5 business days, you will receive a **permanent key** for your license.
- C** Install the permanent key. This opens up the product for permanent usage.

Follow the detailed steps for each stage, see the *Stand-alone license* pane in this booklet.

Installation procedure—network license

- A** Install the IAR license server software on a server computer (omit this step if the license server is already installed).
- B** Activate your license with IAR Systems. Within 5 business days, you will receive a **permanent key** for your license.
- C** Install the permanent key on the license server. This is necessary before you can run IAR Embedded Workbench on a client computer.

- D** Install IAR Embedded Workbench on the client computers, using the permanent key.

Follow the detailed steps for each stage, see the *Network license* pane in this booklet.

Stand-alone license

A **stand-alone license** is a single-user license, locked either to a hardware lock/dongle (the default), or to the computer where the software is installed. A **dongle** is a device you attach to the computer, which allows you to easily move the license to another computer. A dongle is part of the product package only if you have explicitly ordered it.

Network license

A **network license** is a multi-user license, located on a **license server** and used by multiple users on a network.

The network license is locked either to the computer where the license server software runs, or to a hardware lock (dongle). Using a **dongle** allows you to move the network license to another server computer, in case of server failure.

The network license can be used on all **client computers** on the network where IAR Embedded Workbench is installed. However, the network license is made for a maximum number of concurrent users, and the license server software keeps track of the current number of users.

Product upgrade

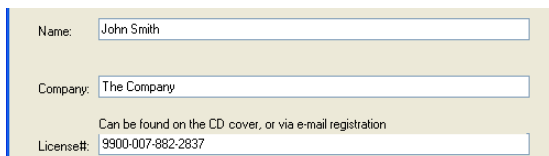
You perform a product upgrade **on the same computer** where a previous version of the same product is already installed.

An upgrade cannot change the license type of the existing product (**stand-alone** license or **network** license). You must continue using the same license type and license lock after installing the upgrade.

Upgrades use the same **license number** and **permanent key** as your existing product. In most cases, these are automatically made available to the installation program, but in some cases you have to provide them yourself. For details, see *Locating the license number and permanent key* at the back of this booklet.

A. Installing the software

- 1 Remove any dongles.
- 2 Insert the IAR Embedded Workbench installation CD. The installation program should start automatically. If it does not, run the `autorun.exe` program from the CD.
- 3 Click **Install IAR Embedded Workbench®**.
- 4 Accept the license agreement when prompted.
- 5 Type your name, company, and the 17-character license number printed on the CD cover:



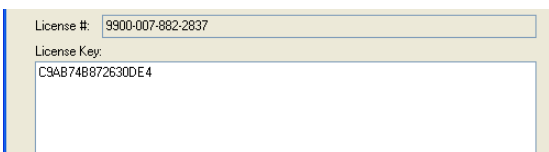
Name:

Company:

Can be found on the CD cover, or via e-mail registration

License#:

- 6 Type the 16-character QuickStart key printed on the CD cover:



License #:

License Key:

- 7 Select the type of license lock you wish to use, either **My computer** or **Hardware dongle**.
If you select **Hardware dongle**, do not attach the dongle to the computer until the installation program instructs you to do so.
- 8 If prompted, select either a **Complete** or a **Custom** installation. If you choose **Custom**, select the components you want to install in the next dialog box.
- 9 Accept the default installation directory or specify a directory of your choice.
- 10 Review the settings for the installation and click **Install** to install the program files.
- 11 If you have selected **Hardware dongle**, follow the instructions on the screen during the installation of the dongle drivers. You will be prompted when it is time to attach the dongle. You might also be instructed to restart your PC. In that case *Activation step 1* described below will start automatically after the restart.

At this point, you can use the IAR Systems product for a limited period of 30 days. To use the product permanently, you have to register the product with IAR Systems to receive a permanent key, and then install that key.

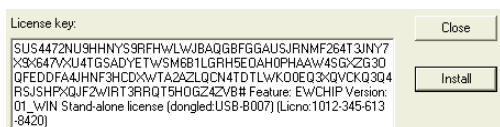
B. Registering the product

- 1 When the program files have been installed, a license activation program is started. Click **Next** to enter the requested information, and select how to register.
- 2 Choose how to register:
 - Now via the web—the recommended choice—make sure to submit the resulting web page to IAR Systems, or via email.
 - Later, the information you entered is saved. Run the license activation program later.
- 3 Finish the activation and installation program.

C. Installing the permanent key

Within 5 business days after sending in your registration, you will receive the permanent key via email. Install it as follows:

- 1 Select and copy the permanent key from the email message, according to the instructions in the message.
- 2 Start the **IAR Systems License Manager** from the **Start** menu. (Make sure you run it with administration privileges.) In the License Manager window, choose **License>Install**.



- 3 Type or paste the permanent key into the text field. Make sure to copy and paste all characters, including the # and all characters following it.
- 4 Click **Install**.

You are now finished with the IAR Embedded Workbench installation.

A. Installing the server software

Note: If the server software is already installed, jump to step B.

- 1 Choose a suitable server computer to act as the license server.
- 2 Remove any dongles.
- 3 Insert the IAR License Server installation CD. The installation program should start automatically. If it does not, run the `autorun.exe` program from the CD.
- 4 Click **Install the IAR License Server**. Accept the license agreement when prompted.
- 5 Select where to place the IAR Systems licensing tool icons in the Windows **Start** menu.
- 6 Review your settings and click **Next** to install the program files.
- 7 Before the installation has finished, you will be asked to activate a network license. Select **Activate a network license**.

B. Activating your product

- 1 If not already started, choose **IAR License Activation** from the Windows start menu.
- 2 When the activation program starts, click **Next**. Select **For license server, register a network license**.
- 3 Type the 17-character license number printed on the IAR Embedded Workbench CD cover.
- 4 Attach the dongle.
- 5 Select the type of license lock you want to use, either **Hardware dongle** or **My computer**.
- 6 Select how to register:
 - Via the web—the recommended choice.
 - Later—the information you entered is saved. Run the license activation program later on.
- 7 Type the registration information and submit it.

C. Installing the permanent key

Within 5 business days after registration, a permanent key will arrive via email. Install it **on the license server computer**:

- 1 Select and copy the permanent key from the email message, according to the instructions in the message.
- 2 Start the IAR Systems License Manager from the Windows start menu. (Make sure you run it with administration privileges.) Then choose **License>Install**.

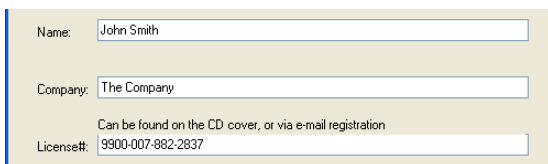
- 3 Paste the permanent key into the text field. Make sure to copy and paste all characters, including the # and all characters following it.
- 4 When asked, confirm that the license is a network license. To see your license, choose **View>All Servers**.
- 5 Make the permanent key available to all client computers; send it via email or save it to a file located in the network.

D. Installing the client software

First make sure that the license server is up and running.

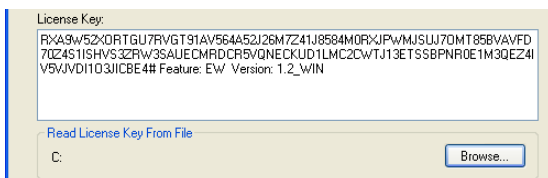
Then repeat these steps on each client computer:

- 1 Insert the installation CD. The installation program should start automatically. If it does not, run the `autorun.exe` program.
- 2 Click **Install IAR Embedded Workbench®**. Accept the license agreement when prompted.
- 3 Type your name, company, and the 17-character license number printed on the CD cover:



A screenshot of a license registration form with three input fields. The first field is labeled 'Name:' and contains 'John Smith'. The second field is labeled 'Company:' and contains 'The Company'. Below the second field is the text 'Can be found on the CD cover, or via e-mail registration'. The third field is labeled 'License#:' and contains '9900-007-882-2837'.

- 4 Provide the permanent key: either paste it from an email message into the text field, or read it from a file to which it has been saved (see step C5).



A screenshot of a license key input screen. It features a large text area containing a long alphanumeric license key: 'RXA9w52X0RTGU7RVGT91AV564A52J26M7Z41J8584M0RXPWwMJSUJ7DMT85BVAVFD70Z4S1ISHV53ZRw3SAUECMRDCR5VQNECKUD1LMC2CwTJ13ETSSBPNR0E1M3QEZ4I V5VJVDI103JICBE4# Feature: EW/ Version: 1.2_WIN'. Below the text area is a link that says 'Read License Key From File'. At the bottom, there is a label 'C:' followed by a 'Browse...' button.

- 5 Accept the default installation directory or specify a directory of your choice.
- 6 If prompted, select either a **Complete** or a **Custom** installation.
- 7 Review the settings for the installation and click **Next** to install the program files.

You are now finished with the installation.

A. Installing the product upgrade

Perform these steps on each computer where you currently have IAR Embedded Workbench® installed:

- 1 If you wish to completely **replace** your existing product installation—that is, to use exactly the same installation directory—do as follows:
 - First make copies of linker command files, libraries, and any other product files you have modified in your existing installation. These files will otherwise be overwritten. Your own project files will remain intact.
 - Then uninstall the current version of the product by selecting the appropriate **Uninstall IAR Embedded Workbench** item from the Windows start menu or the Control Panel.
- 2 Insert the IAR Embedded Workbench installation CD. The installation program should start automatically. If it does not, run the `autorun.exe` program from the CD.
- 3 Select **Install IAR Embedded Workbench®**.
- 4 Accept the license agreement when prompted.
- 5 Type your name and company. The 17-character license number should be displayed. If it is not, type the license number of the product you are upgrading. See the text box *Locating the license number and permanent key* for details.

Name:

Company:

Can be found on the CD cover, or via e-mail registration

License#:

- 6 The permanent key should be displayed. If it is not, you must provide the permanent key of the product you are upgrading (see the text box *Locating the license number and permanent key* for details). You can either paste it into the text field, or browse to a file in which you have saved it:

License Key:

```
FXA9W52XORTGU7RVGT91AV564A52J26M7Z41J8584M0RXPW/MJSUJ70MT85BVAVFD70Z4S11SHV53ZRW3SAUJECMRDCR5VQNECKUD1LMC2CWJTJ13ETSSBPNR0E1M3QEZ41V5VJVD1103JICBE4# Feature: EW Version: 1.2_WIN
```

Read License Key From File

C:

- 7 Accept the default installation directory or specify a directory of your choice.

Note: If the installation directory is the same as the previous installation of the product, make sure you have first uninstalled the previous version. See step A1.

- 8 If prompted, select either a **Complete** or a **Custom** installation.
- 9 If you choose **Custom**, select the components you want to install in the next dialog box. Note that this step does not always apply.
- 10 Review the settings for the installation and click **Next** to install the program files.

You are now finished with the IAR Embedded Workbench upgrade.

If you have a **network** license, make sure to perform the above steps on each client computer.

Note: For information about how to move a license between computers, see the License transfer pane.

B. Upgrading the license server

Product upgrades for **network** licenses might come with an upgrade CD for the license server software. If that is the case, perform the following steps on the computer where you have the current license server software installed.

Note: This will shut down the license server and make all network licenses temporarily unavailable.

- 1 Uninstall the current version of the license server software by selecting the appropriate **Uninstall IAR License Server** item from the **Start** menu or the Control Panel.
- 2 Remove any dongles.
- 3 Insert the IAR License Server installation CD. The installation program should start automatically. If it does not, run the `autorun.exe` program from the CD.
- 4 Click **Install the IAR License Server**.
- 5 Accept the license agreement when prompted.
- 6 Select the location of the IAR Systems licensing tool icons in the Windows **Start** menu.
- 7 Review the settings for the installation and click **Next** to install the program files.
- 8 If you are asked to activate or register the product, select **Finish the installation without activating a license**. You should **not** register the license server upgrade, because you already have registered the product when you first installed it.
- 9 Connect your dongle and restart the license server.

You are now finished with the IAR Systems license server upgrade.

A. Moving a stand-alone license locked to a dongle

If you need to transfer your license between computers on a regular basis, do as follows:

- 1 Your IAR Embedded Workbench is already installed, activated, and registered on computer A using the QuickStart key as described earlier in this booklet. You also specified **Hardware dongle** as the type of license lock to be used.
- 2 Make the permanent key available to computer B.
- 3 Install IAR Embedded Workbench on computer B as described earlier, but with one important exception: instead of using the QuickStart key, type the permanent key. Specify **Hardware dongle** as the type of license lock to be used. When prompted, move the dongle to computer B.

You can now use IAR Embedded Workbench on both computers by simply moving the dongle between them.

B. Moving a network license locked to a dongle

The network license should typically be locked to the dongle that is included in the product package. To move the network license to a new license server computer, for example in the case of server failure, do as follows:

- 1 Install the license server software on the new computer as described earlier in this booklet. Do not activate or register the license.
- 2 Make the permanent key available to each client computer.
- 3 On each client computer, re-install the permanent key as described earlier.

You have now transferred the license server software to the new computer.

C. Moving a stand-alone license locked to a computer

If your stand-alone license is locked to a computer, you might want to move that license to another computer, for example when purchasing a new computer.

To transfer a license between two computers, the license must first be deactivated on the old computer and then activated on the new computer. For this to work correctly, license and host information must be transferred between the two computers as follows:

- 1 On the old computer, make the permanent key available to the new computer by saving it to a file. For information about how to locate the permanent key, see the back of this booklet.
- 2 On the new computer, install the product according to the instruction for stand-alone licenses.

Next, you will create the transfer ID on the old computer:

- 3 On the old computer, start the IAR Systems License Manager from the Windows start menu. Make sure you run it with administration privileges.

- 4 In the License Manager window, choose **License>Transfer**.
- 5 Select **Export a license from this PC to another PC** and select the license that you want to transfer. Click **Next**.
- 6 In the next dialog box you receive the transfer ID, which you will need on the new computer. Click **Save To File** and save to a file that you have access to on the new computer.
- 7 Click **Next** and keep the **Transfer License** dialog box open on the old computer. You will return to it later.

Next, you will create the target ID on the new computer:

- 8 On the new computer, start the IAR Systems License Manager from the Windows start menu. Make sure you run it with administration privileges.
- 9 In the License Manager window, choose **License>Transfer**.
- 10 Select **Import a license to this PC from another PC**.
- 11 In the next dialog box, provide the transfer ID you received in step 6. Click **Read From File** and locate the file containing the transfer ID.
- 12 In the next dialog box you receive the target ID, which you will need on the old computer. Click **Save To File** and save to a file that you have access to on the old computer.
- 13 Click **Next** and keep the license transfer dialog box open on the new computer. You will return to it later.

Next, you will create the license transfer code on the old computer:

- 14 On the old computer, provide the target ID you received in step 12. In the dialog box, click **Read From File** and locate the file containing the target ID.
- 15 Click **Transfer**. The license now becomes inactive and can no longer be used on the old computer.
- 16 In the next dialog box you receive the license transfer code, which you will need on the new computer. Click **Save To File** and save to a file that you have access to on the new computer.
WARNING: If you lose the transfer code, you will not be able to activate the license on the new computer. This means that the license cannot be used on any computer.
- 17 Click **End** to complete the transfer of the license on the old computer.

Next, you will activate the license on the new computer:

- 18 On the new computer, provide the license transfer code you received in step 16. In the dialog box, click **Read From File** and locate the file containing the transfer code.
- 19 Click **Complete** to complete the transfer of the license to the new computer.

Locating the license number and permanent key

In some cases, you must manually locate and provide the license number and the permanent key of the product you are using. If this is applicable for your installation, you will be prompted to do so when you run the installation program.

The **license number** can be found in the letter accompanying the upgrade, or on the CD cover of the original product. The **permanent key** can be found in the email message you received from IAR Systems when you registered the product.

They can also be found in the current installation of your product. See the *Installation and Licensing Guide* for details.

System requirements

For client computers, see the *Release notes* on your product CD.

Recommendations for the license server computer:

- A PC with a 32-bit version of Windows 2000, Windows XP, Windows Server 2003, or Windows Vista using a **static** TCP/IP address.
- A 1 GHz, or faster, Pentium II processor with at least 256 Mbytes of RAM (for Vista 1 Gbyte), and 410 Mbytes of free disk space.

On a PC running Windows XP/Service Pack 2 or Vista, turn off the Windows firewall or add UDP port 5093 as an exception.

Troubleshooting

If you have problems concerning the installation or license:

- Read the *Installation and Licensing Guide*, included on the product CD as the file `InstallationGuide.pdf`
- Check the technical notes on the Technical Support pages on the IAR Systems website: www.iar.com

Contact your IAR software distributor. If they are unable to assist you, contact IAR Systems Technical Support. Refer to the product box for address information.